

Anchor Handling Tug Supply (AHTS) Vessel



Vessel name:

KPV KAPAS

CLASSIFICATION & FLAG

ABS Class, Maltese Cross + A1+ FiFi Class 1, + AMS, Circle E, AH/Offshore Support & Towing Vessel for restricted services. DPS-1 Enable

NAME/REGISTRY/FLAG/BUILT

KPV KAPAS/Port Klang/Malaysia/2009

IMO NUM : 9537824 Call-sign : 9MLD2

PRINCIPLE DIMENSIONS

Length O.A	: 60.00 m	Length W.L	: 58.74 m
Beam MLD.	: 16.00 m	Depth MLD.	: 6.00 m
Draft MLD./Max	: 5.10 m	Deck Area	: 390 m ² .
Deck Loading	: 5 mt/m ²	Speed	: Max. 13 knots
Bollard Pull	: 73 mt	Endurance	: Min. 22 days
Fuel Type	: MDO	GRT	: 1704 t
NRT	: 511 t	DWT	: 1798.60 t

TANK CAPACITY

Portable Water/FW	: 480 m ³	Fuel Oil.	: 530 m ³
Sludge	: 2.1 m ³	Base Oil	: 185 m ³
Drill Water (DW)	: 478 m ³	Mud	: 200 m ³
Foam Tank	: 10 m ³	Dispersant Tank	: 10 m ³
Sewage Holding Tank	: 12 m ³	Bilge Holding Tank	: 10 m ³

PUMPS

Fuel	: 1 x 100 m ³ /hr at 75 m head
Potable Water	: 1 x 100 m ³ /hr at 75 m head
Fresh Water	: 1 x 100 m ³ /hr at 75 m head
Drill Water	: 1 x 100 m ³ /hr at 75 m head
Dry Bulk Delivery	: 2 x 14 m ³ /hr at 5.67 bar
Liquid mud/Brine	: 2 x 80 m ³ /hr at 75 m head
GS & Fire/Detergent	: 50 m ³ /hr at 57 m head

BULK HANDLING SYSTEM

Suitable for carriage of Cement, Barite and Bentonite with max. density of 2.5.

Total Capacity	: 4 x 1375 ft ³ (156 m ³) approx.
Working pressure	: 80 psi (5.6 bar)

MAIN MACHINERIES

Main Engine & Propulsion System

2 x 2610 BHP @ 750 rpm approx. c/w. CPP reduction gear box C/w. P.T.O. at front for FiFi Pump per engine & @ gear box P.T.O. for the shaft generator of 1000 kW, 415/3/60, 3 wires.

Thrusters (electric motor driven by shaft generator)

Bow Tunnel Thrusters CPP, - thrust of 8 mt,
Stern Tunnel Thrusters CPP, - thrust of 6 mt

Steering Gear & Rudder

2 x High Lift 45° Rudder c/w Flap
2 x Independent Electro-Hydraulic Steering Gear for each rudder

POWER PLANT

Diesel Generator	: 2 x 280 kW, 415/3/50, 3 Wire System, Diesel Driven Alternators
Shaft generators	: 2 x 1000 kW, 415/3/50
Emergency	: 1 x 90 kW, 415/3/50 Generator

DECK MACHINERY

Anchor Handling Cum Towing Winch

Electro-Hydraulic Driven Twin Drums in Waterfall Configuration, 1000 m x 58 mm dia. wire
Brake Holdings - 250 mt (1st layer)/spring loaded hyd. release Dynamic lowering @ 25 mt @ 0 to 36 m/min (1st layer) Remote control in Wheelhouse and local control at site

Towing Pins

2 x 200 t SWL, Equip with rotating liners c/w turntable flaps & hydraulic cylinders for lifting and lowering

Shark Jaws

1 set Hydraulic operated retractable lock jaw of 300 mt SWL. Stopper is suitable for wire and chain of size from 1 3/4" to 3 1/2"Ø

Stern Roller

1.8 m dia. X 4.2 m length with SWL of 375 mt

Reefer Point

4 no. x 16 Amp, 415/3/50 and 4 no. x 32 Amp, 230/1/50

Others

Capstan 2 x 5 m/tonnes @ 15 m/min
Tugger Winch 2 x 10 m/tonnes @15 m/min
Storage Rope Reel 1 x 10 m/tonnes @ 0 to 15 m/min @
Capacity : 1000 mL x 58 mm dia steel wire rope
2 x 45 kW Hydraulic operated with local controls

FIRE FIGHTING EQUIPMENT

External Fire Fighting System

ABS FiFi Class 1 c/w 2 x Fire Monitors with throw length 120 m delivering 2400 m³/hr (Water/Foam) and with all round Fixed Water Spraying System

Fixed Fire Protection System

Fixed CO₂ System for Engine Room & Bow Thruster Room

Fire Alarm & Detection System

As per ABS rules and SOLAS requirements

COMMUNICATION / NAVIGATIONAL EQUIPMENT

Communication System

GMDSS A1 to A3, PA/Talk back and Sound Powered Telephone system
Iridium satellite comm. System with email & voice capability

Navigational Aids Equipment

Echo Sounder, Radars x 2, GPS Navigator (IMO), SART (2), 406 MHz EPIRB, Gyro Compass, Auto Pilot, AIS, SSAS, Speed Log, Navtex Receiver, Magnetic Compass, Anemometer

Searchlights

2 x 2000W, Searchlights c/w remote controls (1 fwd & 1 aft)

ACCOMMODATION

All accommodation spaces and engine control room are full air-condition Accommodation Layout:

1- berth Cabin x 4	= 4 men		
2- berth Cabin x 2	= 4 men		
4- berth Cabin x 8	= 32 men	Total	= 40 men
Sickbay	= 1 man		

** This vessel specification is given in good faith & assumed correct. Details given are without guarantee.

KENCANA NAUTILUS SDN BHD (882459-A)

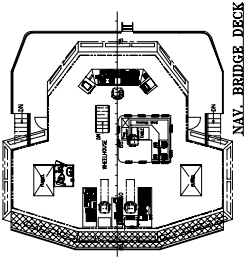
(Formerly known as Thirve Alliance Sdn Bhd)

Level 11, Menara SapuraKencana Petroleum,

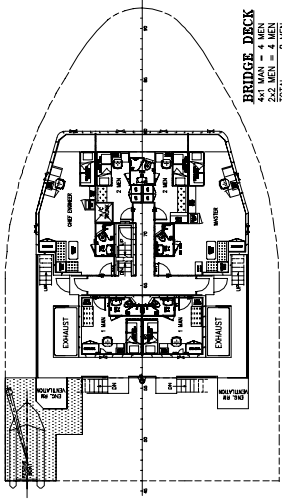
Solaris Dutamas, 1 Jalan Dutamas 1, 50480 Kuala Lumpur

Tel: +603 6209 8000 Fax: +603 6209 7780

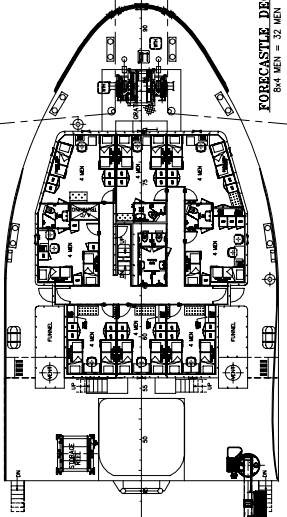
Website: www.sapurakencana.com



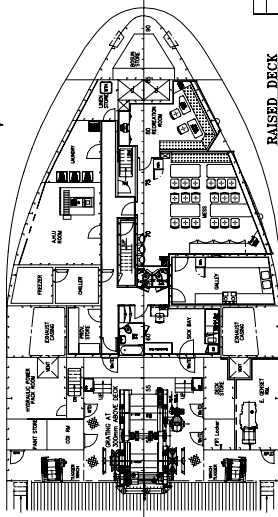
NAV. BRIDGE DECK



BRIDGE DECK
232 MEN = 4 MEN
TOTAL = 8 MEN



FORECASTLE DECK
84 MEN = 32 MEN



RAISED DECK

PRINCIPAL PARTICULARS

LENGTH O.A.	60.00m
LENGTH WL	58.74m
BEAM WLD.	16.00m
DEPTH MLD.	6.00m
DRAFT MAX.	5.10m
COMPLEMENT	40 MEN
POTABLE WATER	450m ³ (Approx.)
D.W./S.W.B.	450m ³ (Approx.)
LIQUID MUD	190m ³ (Approx.)
BASE OIL/BRINE/D.W.	180m ³ (Approx.)
FOAM	10m ³
DISPERSANT	10m ³
DIRTY OIL	150m ³
BILGE HOLDING	11m ²
DECK SPACE	11m ²
DECK LOADING	390m ² (Approx.)
	5 Tonnes/m ²

REMARKS:
WITH STERN TRINER, DPS-1 ENABLE.

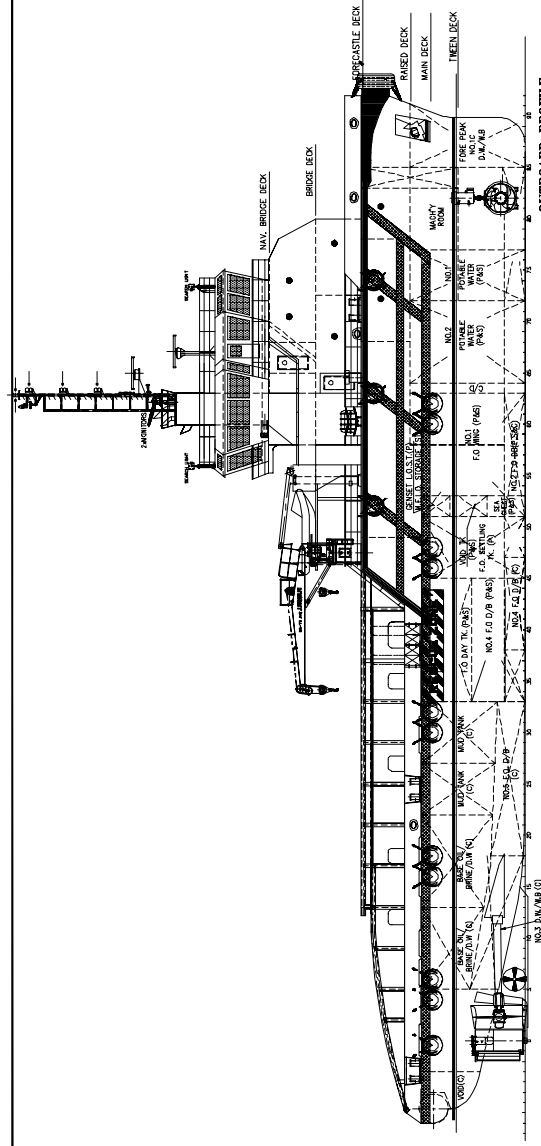
AS ORDERED AS PER SHIPYARD COMMENTS	B	TRAIL
27.03.03 COMPLIMENT CHANGED TO 40 MEN AS PER SHIPYARD REQUEST.	A	PLAN
DATE	MODIFICATION	REV BY
SHIP:		

KFV KAPAS

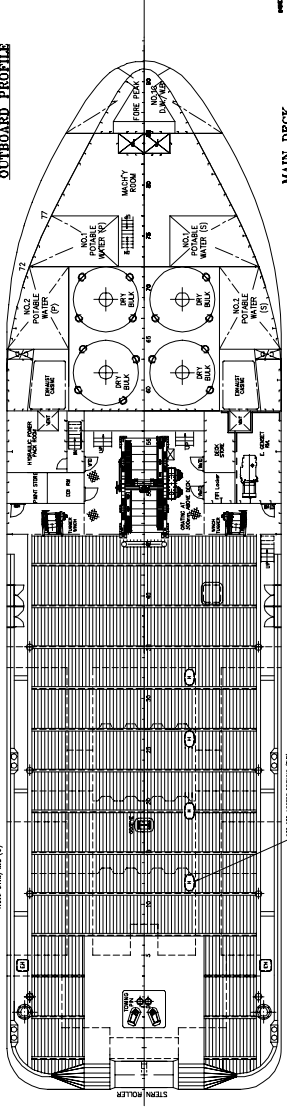
General Arrangement

OWNER	CONAN WU & ASSOCIATES	YARD NO.	10338/25240
CLASS	NAVY KAPAS		
DESIGNER	CONAN WU & ASSOCIATES		
DATE	11/10/03	SCALE	1:150
DRAWN	CHKD	REV	
20/03/03	02/03/03	DRAWING NO.	C4055H/G-1 B

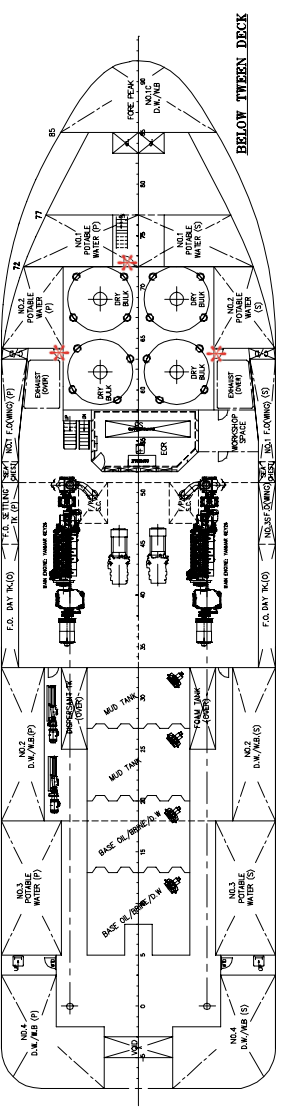
THE DRAWING AND THE INFORMATION CONTAINED HEREIN ARE SUPPLIED BY CONAN WU & ASSOCIATES, INC. AND MUST NOT BE USED OR REPRODUCED IN WHOLE OR IN PART WITHOUT PERMISSION IN WRITING.



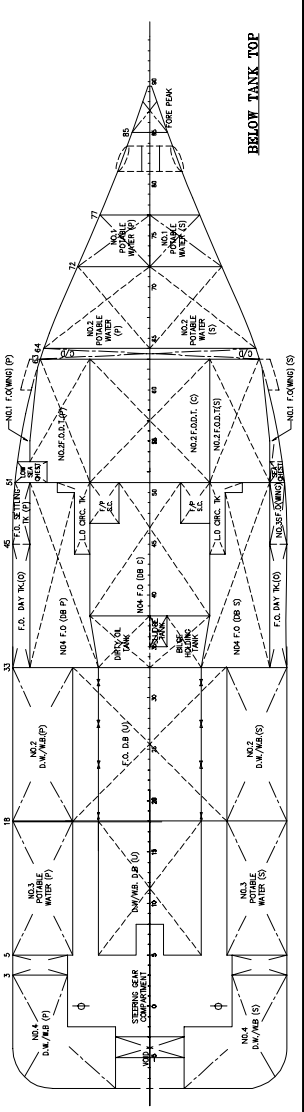
OUTBOARD PROFILE



MAIN DECK



BELOW TWEEN DECK



BELOW TANK TOP