

Derrick Pipelay Barge



Vessel name:

SAPURAKENCANA 900

The SapuraKencana 900 is a Heavylift and Pipelay construction support barge, with an eight-point mooring system, a 1000ST (907MT) pedestal-mounted crane, helideck and accommodation for 292 personnel.

General Description

- Pipeline installation (rigid and flexible)
- Platform installation (fixed and floating)
- Topsides hookup and maintenance
- Mooring system installation
- Diving support (air and saturation)
- Accommodation support

Owner	: SapuraKencana 900 Pte Ltd
Year of Build	: 1982 (2009 upgrade) (2013 Accom increase)
Class	: ABS (✳) A1 Barge
Flag	: Malaysia
Area of Operation	: Worldwide

Main Dimensions

Length overall	: 129.14 m
Beam	: 31.93 m
Depth	: 7.62 m
Draft light	: 2.73 m
Draft loaded	: 5.35 m
GRT	: 11916 t
NRT	: 3574 t
Lightship	: 9280.689 mt

Accommodation

Accommodation for 292 persons.

Cabins	: 47 x 4 person berth
	: 51 x 2 person berth
	: 2 x 1 person berth

Helideck suitable for EH 101:

Allowable weight	: 14.6 t
Perimeter 'D' diameter	: 23.0 m

Capacities

Clear deck	: 65 x 20 m
Deck strength	: 10 t/m ²
Dead weight	: 9325 t
Potable water	: 127 m ³
Fresh water	: 2157 m ³
Fuel oil	: 2782 m ³

Galley	
Freezer Cap	: 35 m ³

Pipelay Equipment

- Fully enclosed and air conditioned welding tunnel (7 stations) suitable up to 52" OD pipeline (inc. coating)
- Manual, semi-automatic and automatic welding
- 2 x 60 t tensioner and 120 t A+R winch
- 41 m ballastable articulated stinger (2 sections)
- Maximum pipelay water depth: 400 m
- 3 off 50 t Luffing davits (optional)

Derrick Pipelay Barge

SAPURAKENCANA 900

Machinery

Generators:

- Main : 4 x 1,360 kw, 460 V, 3 Ø, 60 Hz
- Emergency : 1 x 550 kw, 440 V 3 Ø, 60 Hz

Air Compressors:

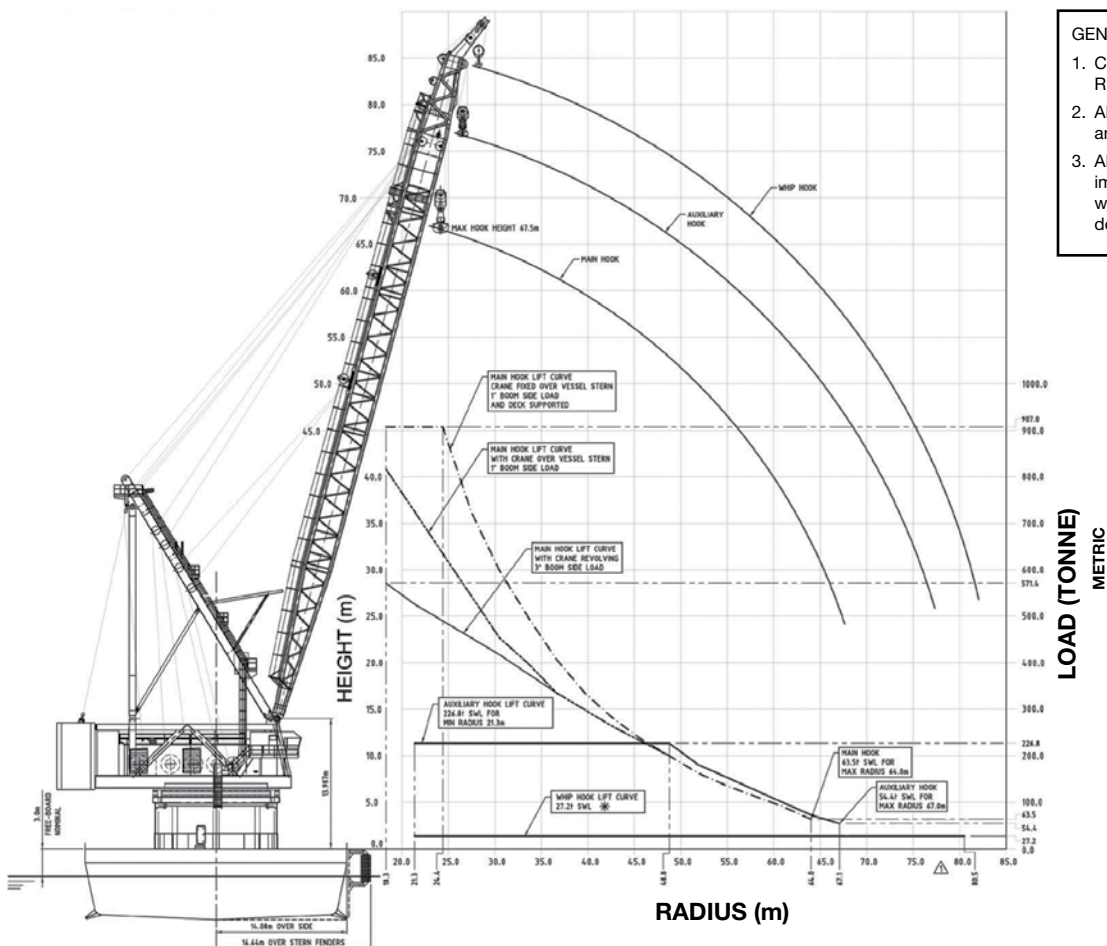
- 2 x 900 cfm @ 9 bar I.R.
- 2 x 30 cfm @ 18 bar I.R.
- 1 x 150 cfm @ 9 bar

Water Maker:

- 2 x 45 t/day R.O.
- 1 x 50 t/day R.O.

Mooring System

- Winches : Centrally controlled
- Bow : 2 x 66 t double drum, variable speed, independent electric drive with water cooled drag brakes
- Stern : 4 x 66 t single drum, variable speed, electric drive with water cooled drag brakes
- Capacity : 1400 m x Ø 52 mm IWRC
- Anchors : 8 x 12t Delta Flipper anchors



GENERAL NOTES

1. Curve capacities comply with ABS Crane Rules 1991.
2. All capacities are with water tank attached and filled.
3. All rated capacities include ABS 10% impact factor only and should be derated with applicable dynamic factors to determine safe lift capacity for each lift.

** This vessel specification is given in good faith & assumed correct. Details given are without guarantee.
 ** Owners reserve the right to amend the specifications without notification.

SapuraKencana Petroleum Berhad
 Level 6, Menara SapuraKencana Petroleum
 Solaris Dutamas, 1, Jalan Dutamas 1
 50480 Kuala Lumpur, Malaysia
 Tel: +603 6209 8000 Fax: +603 6209 3800

www.sapurakencana.com

SapuraKencana TL Offshore Sdn Bhd
 (Formerly known as TL Offshore Sdn Bhd)
 Offshore Construction Services
 6th Floor, Sapura@Mines, 7 Jalan Tasik,
 The Mines Resort City, 43300 Seri Kembangan,
 Selangor, Malaysia
 Tel: +603 8659 8884 Fax: +603 8659 3474
 Queries: bizdevelopment@sapurakencana.com