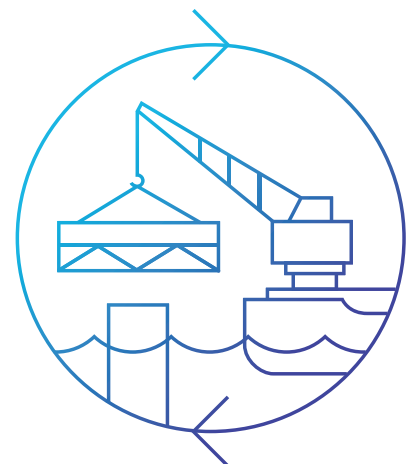




LTS 3000

Heavy Lift
Pipe Laying Vessel



Learn more at www.sapuraenergy.com

Heavy Lift Pipe Laying Vessel

LTS 3000



Principle Dimensions

Classification :	ABS A1 (E) Pipelay / Heavy Lift Vessel AMS (DPS-1)
Total Length :	160.70 m
Breadth Moulded :	37.8 m
Depth to Work Deck, Moulded :	15.0 m
Depth to Freeboard Deck, Moulded :	9.1 m
Draft Designed :	6.5 m (max.), 4.0 m (min.)
Main Deck Strength :	10 tonnes/m ²
Free Deck Area :	2,000 m ²

Accommodation

5 x 1 Berth Cabins with Day Room :	5 men
21 x 1 Berth Cabins :	22 men
22 x 2 Berth Cabins :	46 men
55 x 4 Berth Cabins :	216 men
Total :	289 men
Equipped with 2 Recreation Rooms, 1 Galley, 1 Prayer Room	

Pipeline Capabilities

Pipe Size :	6" to 60" OD
Tension Capacity :	200 MT (2 nos. x 100 MT each)
A & R Winch-Tension Capacity :	200 MT
Welding Stations :	6 nos.
NDT Station :	1 no.
Field Joint Stations :	2 nos.
Davits :	6 nos. x 50 MT
Type of Stinger :	Floating Truss 160 ft long 1 st Section, 60 ft 2 nd Section

Main Crane

Main Hook Capacity :	2,722 MT @ 27 m Rad.
Aux. Hook Capacity :	725 MT @ 53 m Rad.
Whip Hook Capacity :	100 MT @ 95 m Rad.
Boom Length to Main Hook :	75 m
Boom Length to Auxiliary Hook :	85 m
Boom Length to Whip Hook :	95 m

Pipe Handling Cranes (2 Nos.)

Fixed Pedestal Cranes :	2 each
Maximum Lifting Capacity :	50 MT @ 29 m Rad.

Mooring System

150T Mooring Winches :	10 nos.
Mooring Anchors :	10 ea of 12.5 MT Delta Flipper

Propulsion

Speed :	11 knots
Engine :	Wartsila 8L26
Bow Thruster :	1 x 1,250 kW
Stern Thruster :	2 x 2,400 kW

Machinery

Main Generators :	3 x 2600 kW
Emergency Diesel Generator :	1 x 1000 kW
Fresh Water Maker (RO) :	60 tonnes/day with 1 standby
Sewage Treatment Plant :	2 nos. for 330
Air Compressors :	Approx. 2,000 cfm @ 10 bar
Machine Shop :	1 ea

Tank Capacities

SWB/FW Tank (non-potable) :	12,465 m ³
FW Tank (Potable) :	942 m ³
F.O. Tank :	2,334 tonnes
Dirty Oil Tank :	50.29 m ³
Lube Oil Tank :	47 tonnes

Pumps

Ballast Pump :	2 @ 360 m ³ /hr
Anti Heeling Pump :	1 x 1600 m ³ /hr & 2 x 1400 m ³ /hr
FO Transfer Pump :	2 @ 22.5 m ³ /hr
Fresh Water Transfer Pump :	2 @ 35 m ³ /hr
Sewage Discharge Pump :	1 x 10 m ³ /hr
Sludge Oil Pump :	1 x 14.2 m ³ /hr
Bilge Pump :	2 x 35 m ³ /hr
Fire & GS Pump :	1 @ 100 m ³ /hr & 3 @ 160 m ³ /hr
Emergency Fire Pump :	1 @ 100 m ³ /hr

Safety Equipment

4 x 90 capacity Life Boat :	360
Life Jackets :	200% coverage of the total maximum onboard
Life Buoys :	As per class & flag requirement
Rescue Boat (FRC) :	1 no. x 25 HP Boat
L/Boat (Rescue Boat) :	2 nos.

Radio Communications Equipment

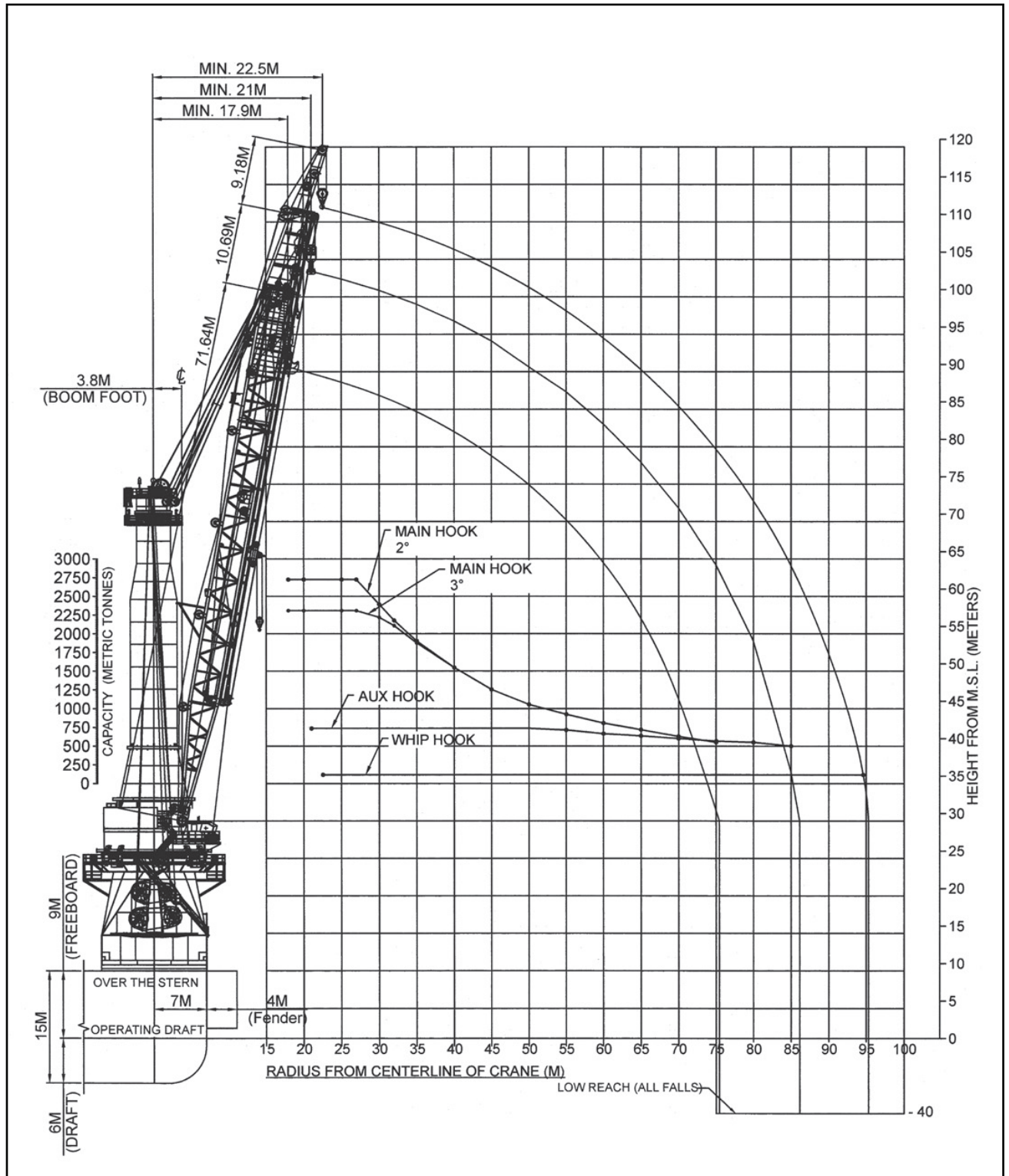
SSB, DSC, Inmarsat C, VHF (GMDSS), GMDSS Portable, Portable VHF, Air band VHF, UHF, Portable Air Bank VHF & Internet Line Helicopter

Navigation System

Helideck Capable of Handling S61-N Sikorsky Type Helicopter Gyro-Compass, Sat Com, V-SAT, Radars, Radar Transponders, EPIRB Radio Beacons, SatNav System DGPS

*** Owner reserves the rights to amend the specifications without notification.*

LTS 3000



LTS 3000

